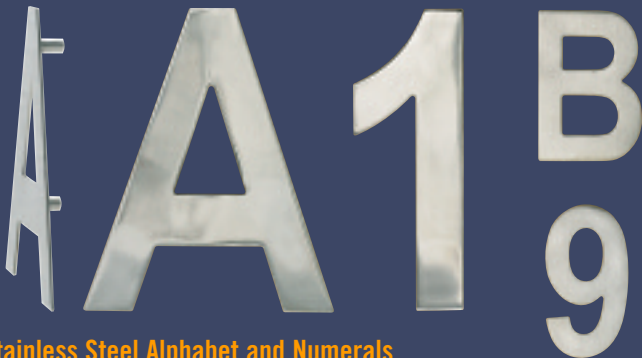


# NEW PRODUCTS RELEASE

## STAINLESS STEEL ALPHABET AND NUMERAL



### Stainless Steel Alphabet and Numerals

- Rear concealed fix or can be shadow fixed (threaded fixing spindle and plugs supplied).
- Attractive modern font.

POLISHED  
OR SATIN  
FINISH

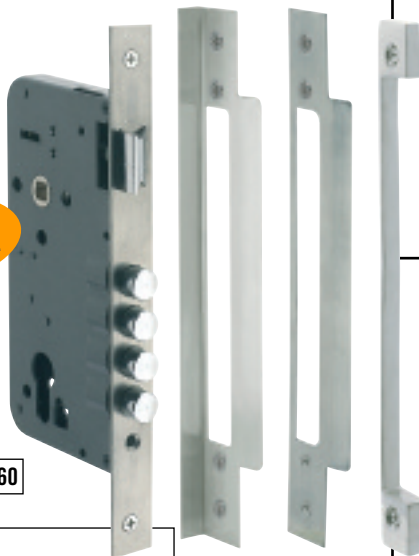
CODE	ALPHA	NUMBER	SIZE	FINISHES
SSP65	A > D	0 > 9	65	Polished Stainless Steel
SSP130	A > D	0 > 9	130	Polished Stainless Steel
SS65	A > D	0 > 9	65	Satin Stainless Steel
SS130	A > D	0 > 9	130	Satin Stainless Steel

## 85mm CENTRE EURO SASH LOCK

### 9068 Series

- Four hardened steel security bolts.
- Double throw on bolts for extra security.
- Double action key mechanism engages bolt and latch.
- Through fixing.

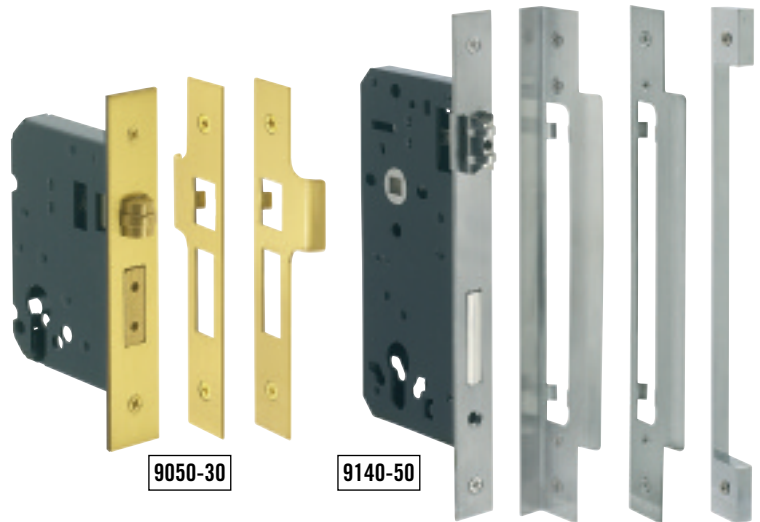
85mm  
CENTRE



9068-60

CODE	CS	BS	FINISHES
9068-50	78 x 170	50	Polished Brass / Stainless Steel
9068-60	88 x 170	60	Polished Brass / Stainless Steel

## EURO PROFILE ROLLER BOLT LOCKS



9050-30

9140-50

### 9050 Series

- Left and right hand strikers.
- Adjustable spring tension and projection on roller bolt.
- Through fixing.

### 9140 Series – Long Body

- Can be used with long plated 85mm euro punch or rose door furniture.
- Flat and rebated strikers suit either right or left handed doors.
- Through fixing.

CODE	CS	BS	FINISHES
9050-25	64 x 107	45	Polished Brass / Stainless Steel
9050-30	76 x 107	57	Polished Brass / Stainless Steel
9140-50	78 x 170	50	Polished Brass / Stainless Steel
9140-60	88 x 170	60	Polished Brass / Stainless Steel

## REPLACEMENT REBATED FOREND COVER PLATE

### 9052LC

### Forend Cover Plate

- Easy to install cover plate encases forend for neat finish (packer and strip not visible).
- To be used with 9052 rebated lock.



CODE	L	W	FINISHES
9052LC	167	27	Polished Brass / Stainless Steel

# ORDER NOW

# PHONE + 61 3 9481 4044

FAX + 61 3 9489 9720 EMAIL [sales@delfbrass.com.au](mailto:sales@delfbrass.com.au)

## BLIND ESCUTCHEON

PH997

- Conceals drill holes for cylinder or door furniture when no longer required.



CODE	Ø	FINISHES
PH997	52	Polished Brass/Chrome Plate/Satin Chrome Plate

## NEW PACKAGING

Designer Collection (lever on rose) door furniture now available in clam shell packaging.



## KEYED WINDOW LOCKS



8017



8017C

### Keyed Window Lock – 8017 Series

- Suitable for double hung windows.
- Available keyed alike.

CODE	L	W	P	FINISHES
8017	70	42	25	Polished Brass/Chrome Plate



AVAILABLE  
IN POLISHED  
BRASS

8020SCP

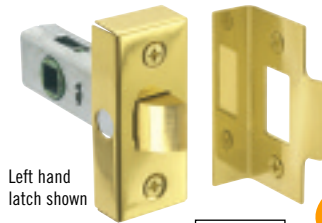
8020W

### Keyed Window Lock – 8020 Series

- Suitable for awning, casement and sliding windows.
- Available keyed alike.

CODE	L	W	P	FINISHES
8020	35	45	25	Polished Brass/Satin Chrome Plate/White

## TUBULAR LATCHES



Left hand  
latch shown

TL25PBR



Right hand  
latch shown

TL30SSR

REBATED

### Rebated Tubular Latch – TLR Series

- Suitable for rebated doors.
- Rebated latches are handed.

CODE	BS	FINISHES
TL25R	45	Polished Brass/Nickel Plate
TL30R	60	Polished Brass/Nickel Plate



TL25HDSS



TL30HDPB

HEAVY  
DUTY

### Heavy Duty Tubular Latch – TLHD Series

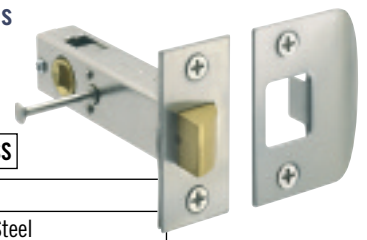
- Heavy duty mechanism suitable for unsprung door furniture.

CODE	BS	FINISHES
TL25HD	45	Polished Brass/Stainless Steel
TL30HD	60	Polished Brass/Stainless Steel

### Privacy Tubular Latch – TLP Series

- Push/Pull privacy pin engages/releases latch mechanism.
- Can be used on long plated and rose door furniture.

TLP6OSS



CODE	BS	FINISHES
TLP6O	60	Polished Brass/Stainless Steel

Backset of privacy pin – 42mm

VICTORIA PROJECT HARDWARE PTY LTD (HEAD OFFICE)  
168–174 Alexandra Parade Clifton Hill Victoria 3068 Australia  
PHONE +61 3 9481 4044 FAX +61 3 9489 9720

NEW SOUTH WALES/ACT JOHN TINTNER AGENCIES PTY LTD  
9 Arthur Street Double Bay New South Wales 2028 Australia  
PHONE 02 9327 7604 FAX 02 9363 1777 MOBILE 0418 238 990

QUEENSLAND BWA ARCHITECTURAL PRODUCTS PTY LTD  
33 Coudrey Street Bardon Queensland 4065 Australia  
PHONE 07 3371 7066 FAX 07 3371 7088 MOBILE 0417 732 395

SOUTH AUSTRALIA/NORTHERN TERRITORY WHYNTIE AGENCIES  
PO Box 1115 Flagstaff Hill South Australia 5159 Australia  
PHONE 0418 844 596 FAX 08 8270 3666

WESTERN AUSTRALIA JENSEN AGENCIES  
Unit 3/15 Dyer Road Bassendean Western Australia 6054 Australia  
PHONE 08 9377 0552 FAX 08 9377 0554 MOBILE 0411 889 914

NEW ZEALAND MORGAN & AICKIN LIMITED  
293A Church Street Onehunga Auckland New Zealand  
PHONE 09 622 1080 FAX 09 622 0940 TOLL FREE 0800 656 611